

Please read this manual carefully before installation and keep it for future reference.

# Owner & Installation Manual



# MRCOOL®

COMFORT MADE SIMPLE

## PRODIRECT

## Electric Heat Kit

### Model: PHK\*\*H

Due to updates and constantly improving performance, the information and instructions within this manual are subject to change without notice. Please visit [www.mrcool.com/documentation](http://www.mrcool.com/documentation) to ensure you have the latest version of this manual.

Version Date: 2-24-21

Thank you for choosing MRCOOL. Please read this manual carefully before installation and keep it for future reference.

Copyright © 2021 MRCOOL, LLC

# Table Of Contents

<b>1</b>	<b>Preperation Before Install .....</b>	<b>1</b>
<b>2</b>	<b>Install Electrical Heating Components .....</b>	<b>2</b>
<b>3</b>	<b>Wiring Diagrams .....</b>	<b>5</b>

## **CAUTION**

1. Ensure that all power supplies are disconnected prior to installing the heat kit.
2. Check heat kit for physical damage. Do not install a damaged heat kit.
3. A means of strain relief and conductor protection must be provided at the supply wire entrance into cabinet.
4. Only use copper conductors.
5. Installation must follow National Electric Code (NEC) and other applicable codes.

Compatible Heat Kits

Kit #.	Description	Unit Capacity Compatibility
PHK05H	5kW heat strip	18K/24K/30K/36K/42K/48K/60K
PHK07H	7.5kW heat strip	18K/24K/30K/36K/42K/48K/60K
PHK10H	10kW heat strip	24K/30K/36K/42K/48K/60K
PHK15H	15kW heat strip	36K/42K/48K/60K
PHK20H	20kW heat strip	48K/60K



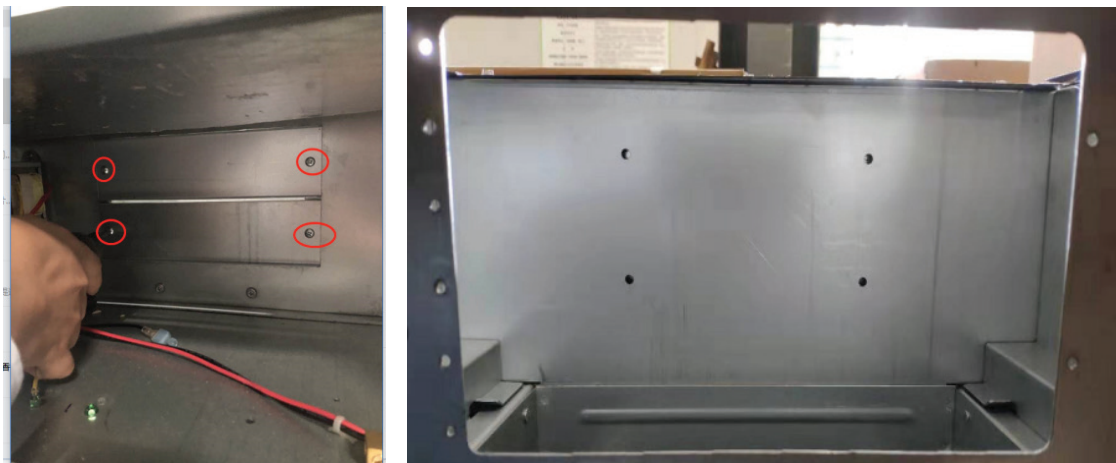
## **IMPORTANT**

**You must use a compatible heat kit listed in the chart above. Using an incorrectly sized heat kit could cause the unit to overheat and/or cause equipment damage.**

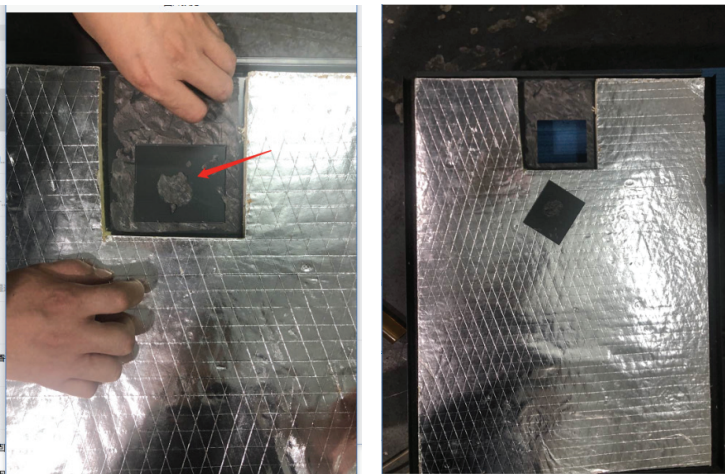
1.) Remove the upper side panel of the air handler



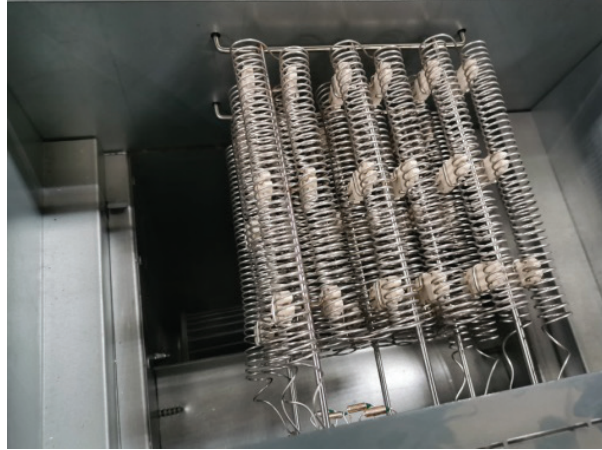
2.) Remove the air duct sealing plate by removing the 4 screws



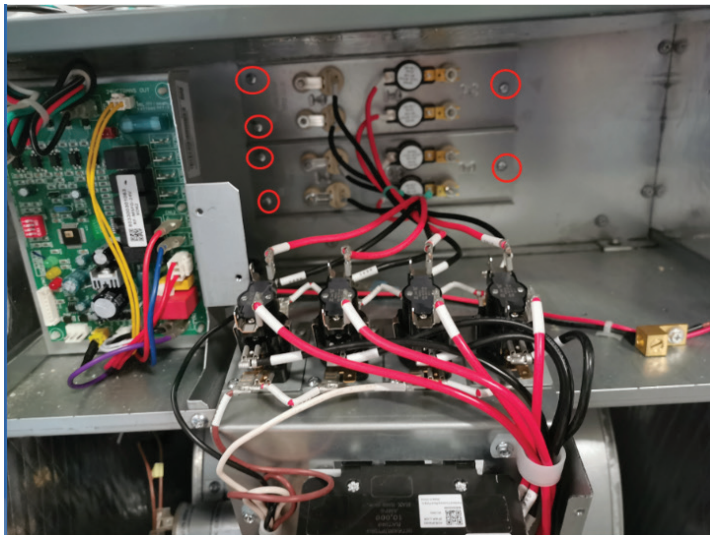
3.) Knock out the covered hole on the front panel



- 1.) Insert the electric heat kit into the air duct installation hole and align the 4 prongs on the end of the heat kit with the corresponding 4 holes on the opposite side of the air duct hole



- 2.) Reinstall screws to fasten the heat kit to air duct



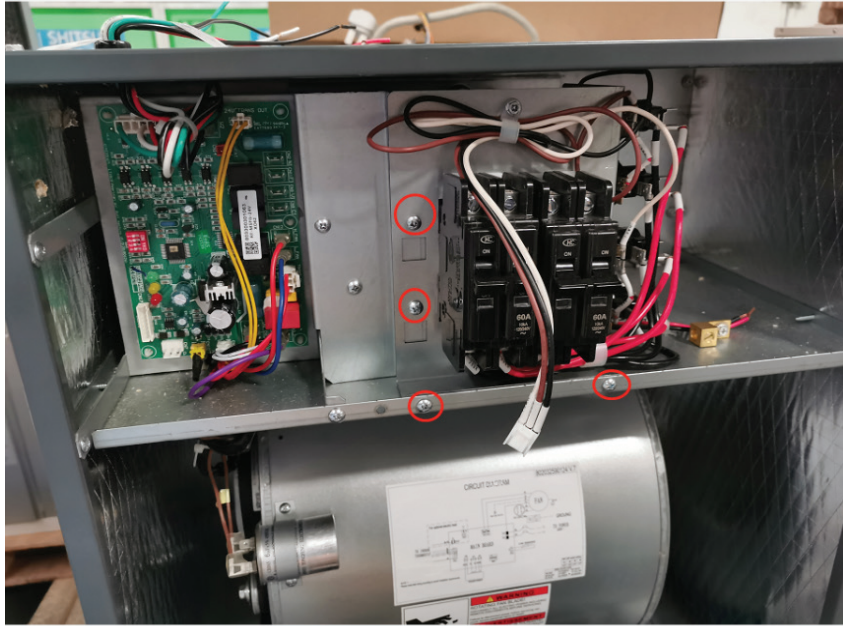
- 3.) Fasten heat kit electrical board bracket to air handler by installing two screws



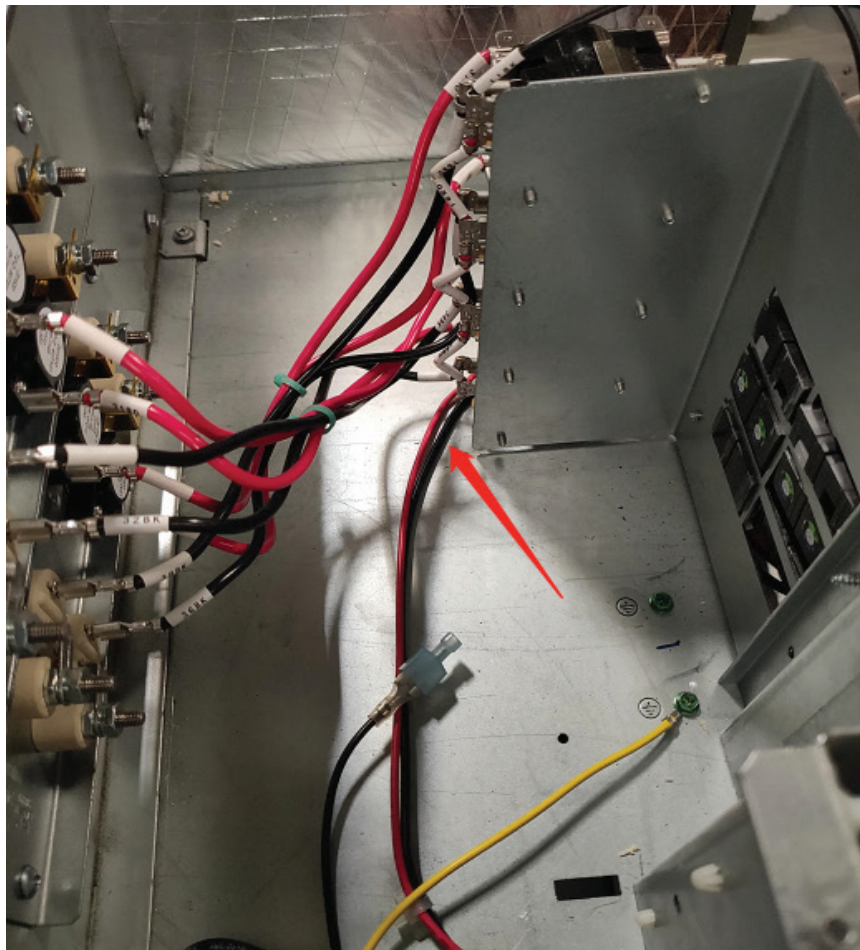


# Installing Electric Heating Components

- 4.) Position the heat kit electrical board on the bracket and fasten with 4 screws

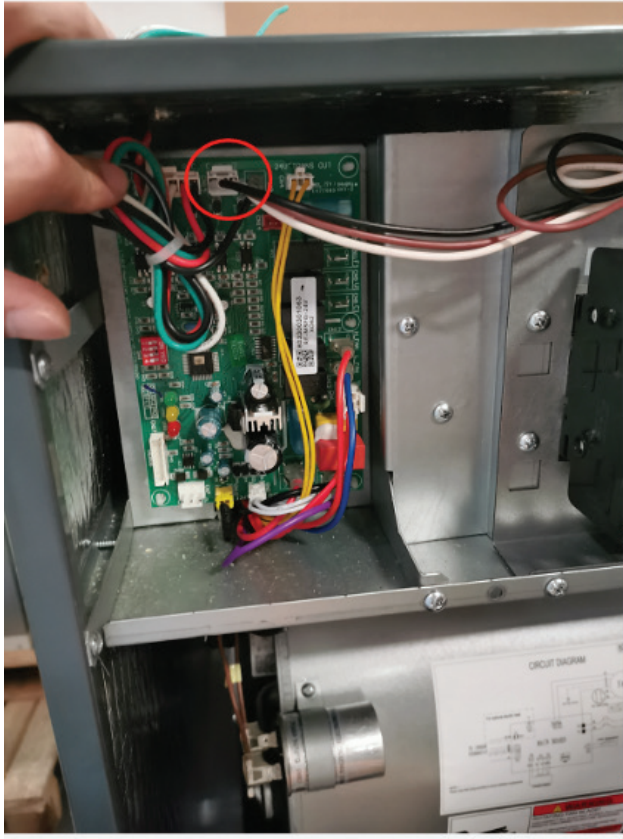


**NOTE:** When installing the electrical installation board, pay attention to the indoor unit power cord and make sure it does not hang or snag on the sharp edges of the sheet metal heat kit bracket. Please refer to the image below.



# Installing Electric Heating Components

## 5.) Insert signal wire into the main electronic control board

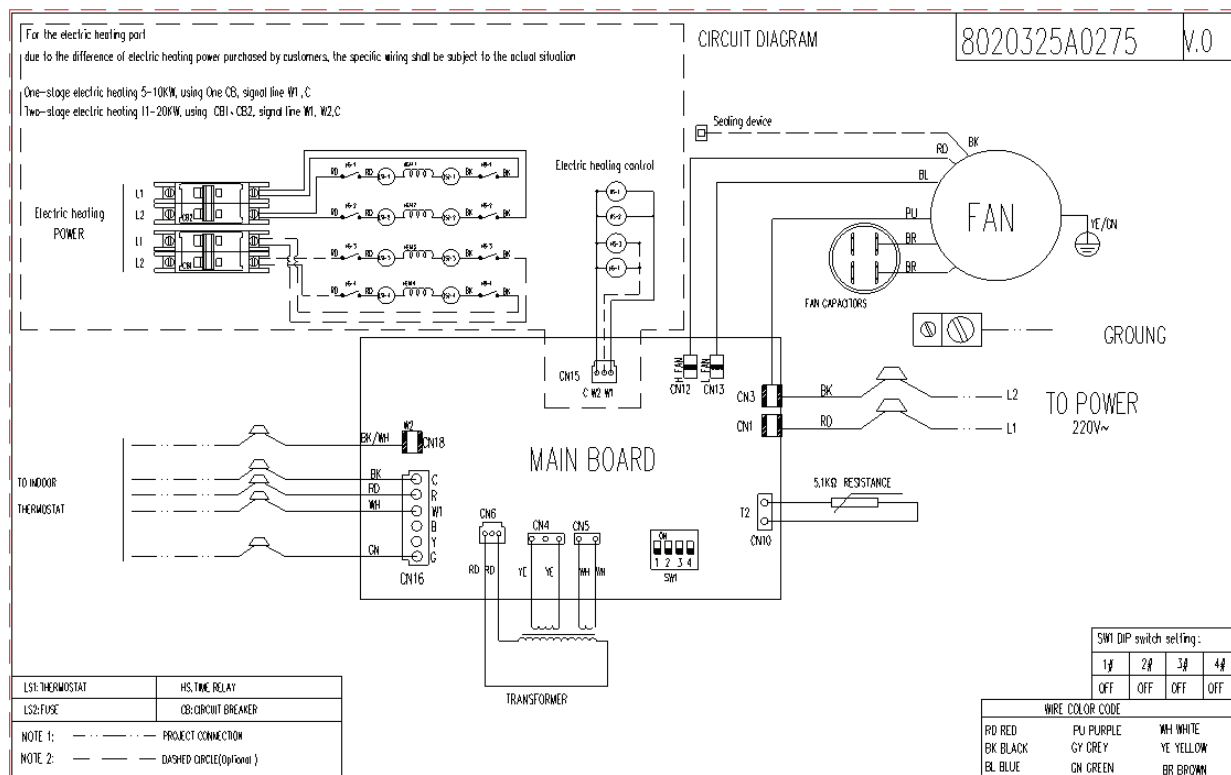


## 6.) Reinstall the upper side panel. The switches for the heat kit should protrude through the hole you knocked out of the panel. Then, turn on the power and check operation.

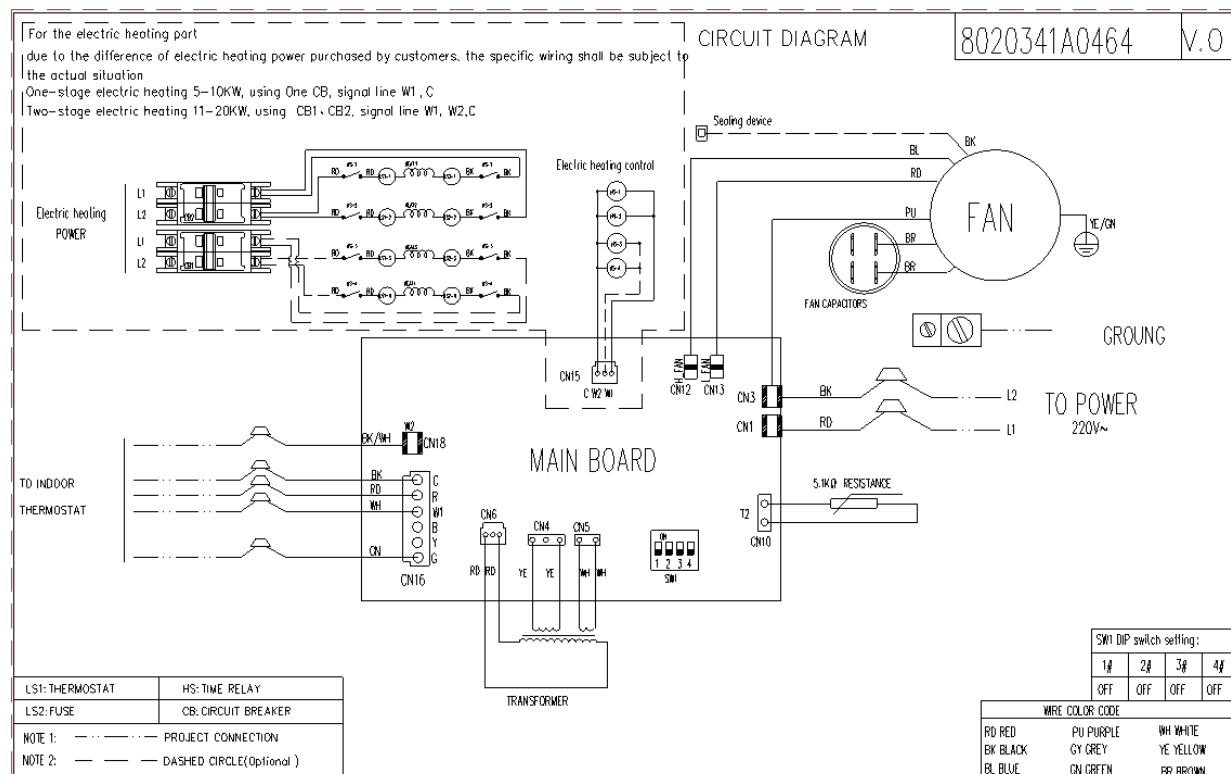


## Air Handler Wiring Diagrams for each model with Heat Kit Installed

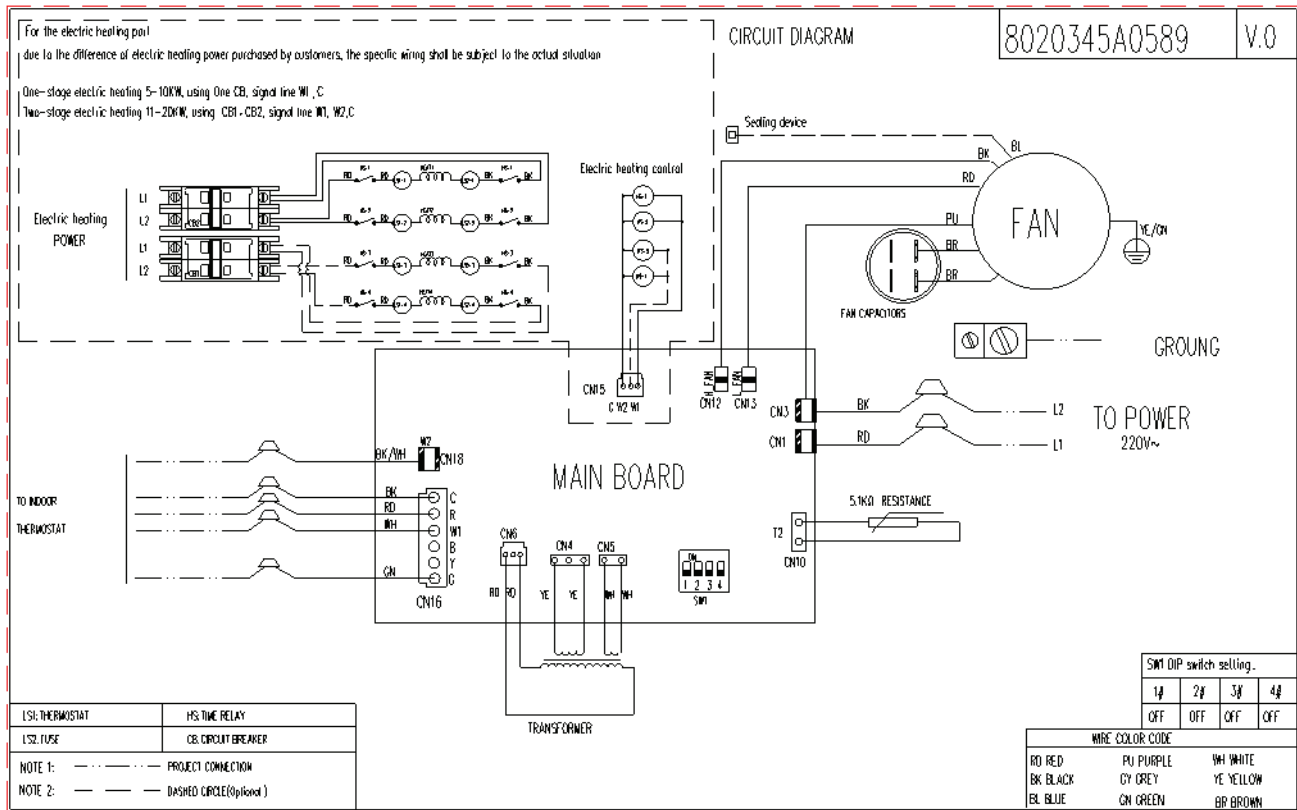
### 1.) 53 Model (18K/24K/30K/36K/42K)



### 2.) 140 Model (48K)

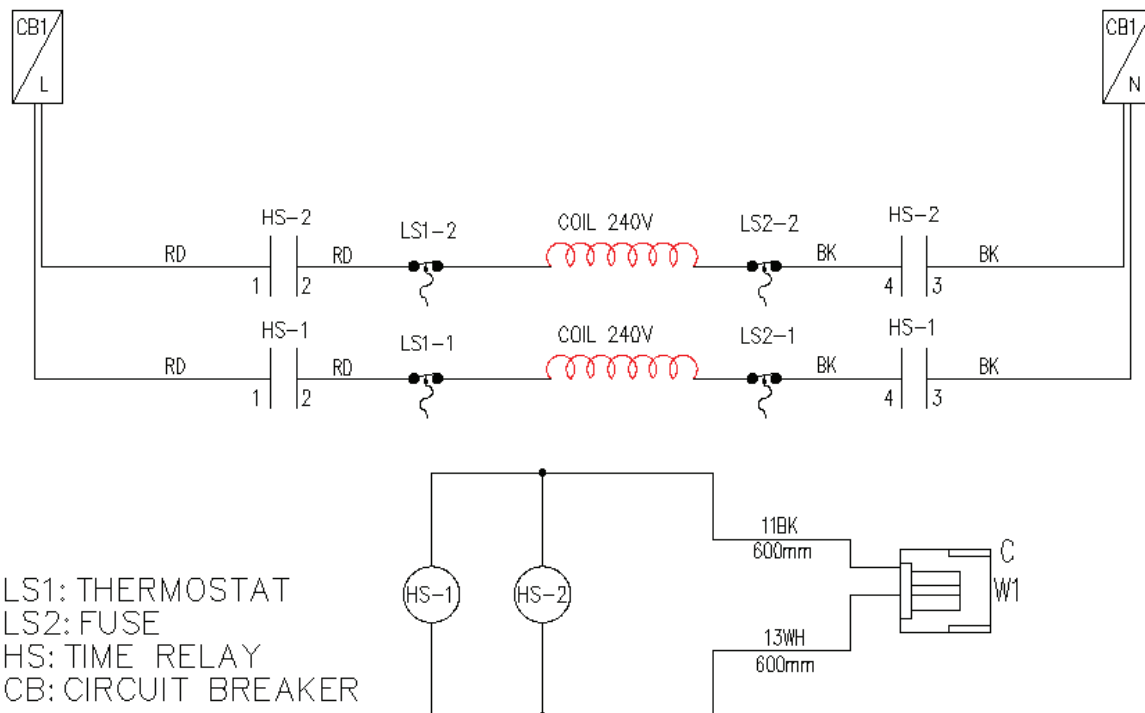


## 3.) 160 Model (60K)



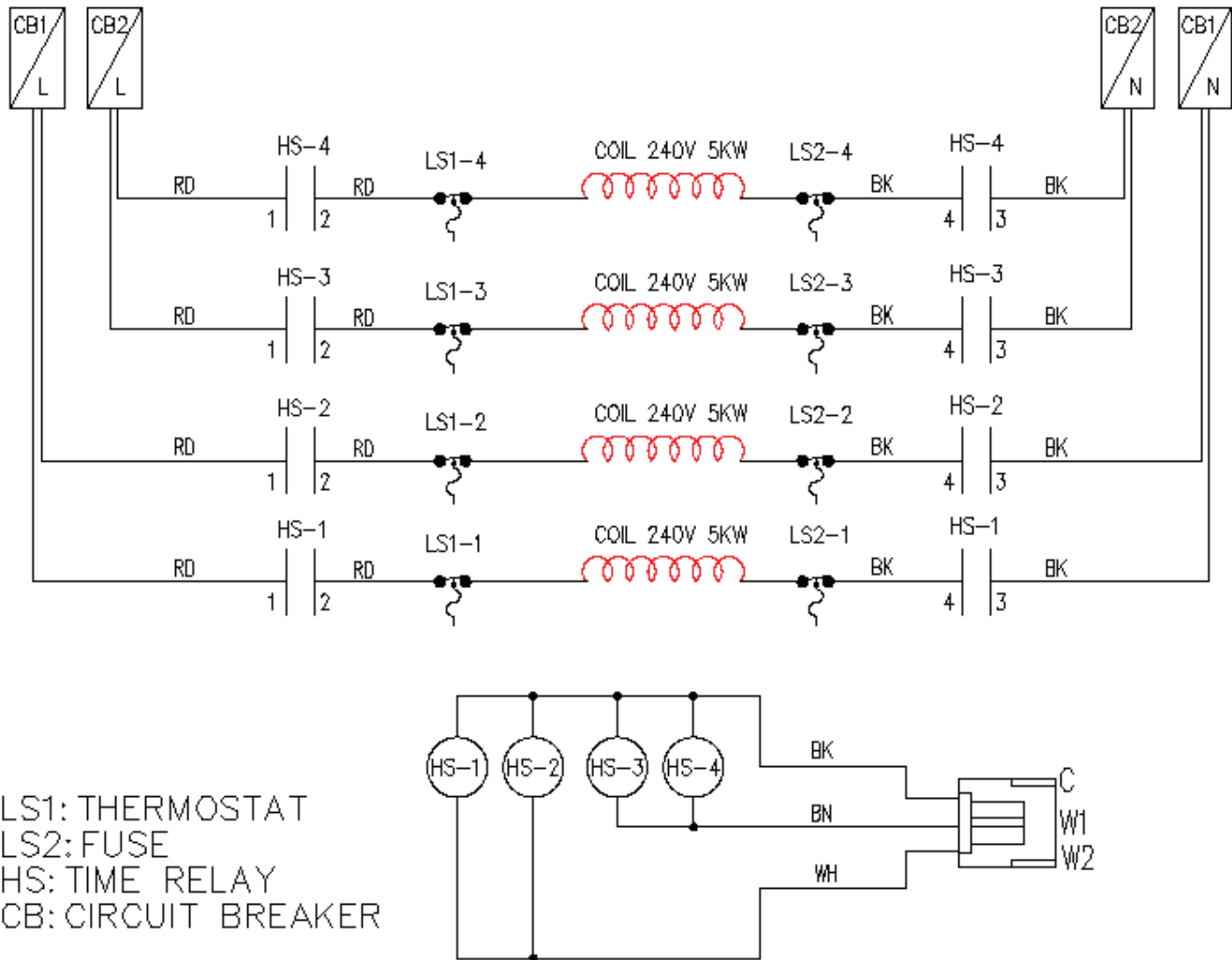
## Schematic diagrams of electric heating components

### 1.) 5-10KW Heat Kit





## 2.) 11-20KW Heat Kit





**MRCOOL®**

**COMFORT MADE SIMPLE**

# **PRODIRECT**

## **Electric Heat Kit**

The design and specifications of this product and/or manual are subject to change without prior notice. Consult with the sales agency or manufacturer for details.